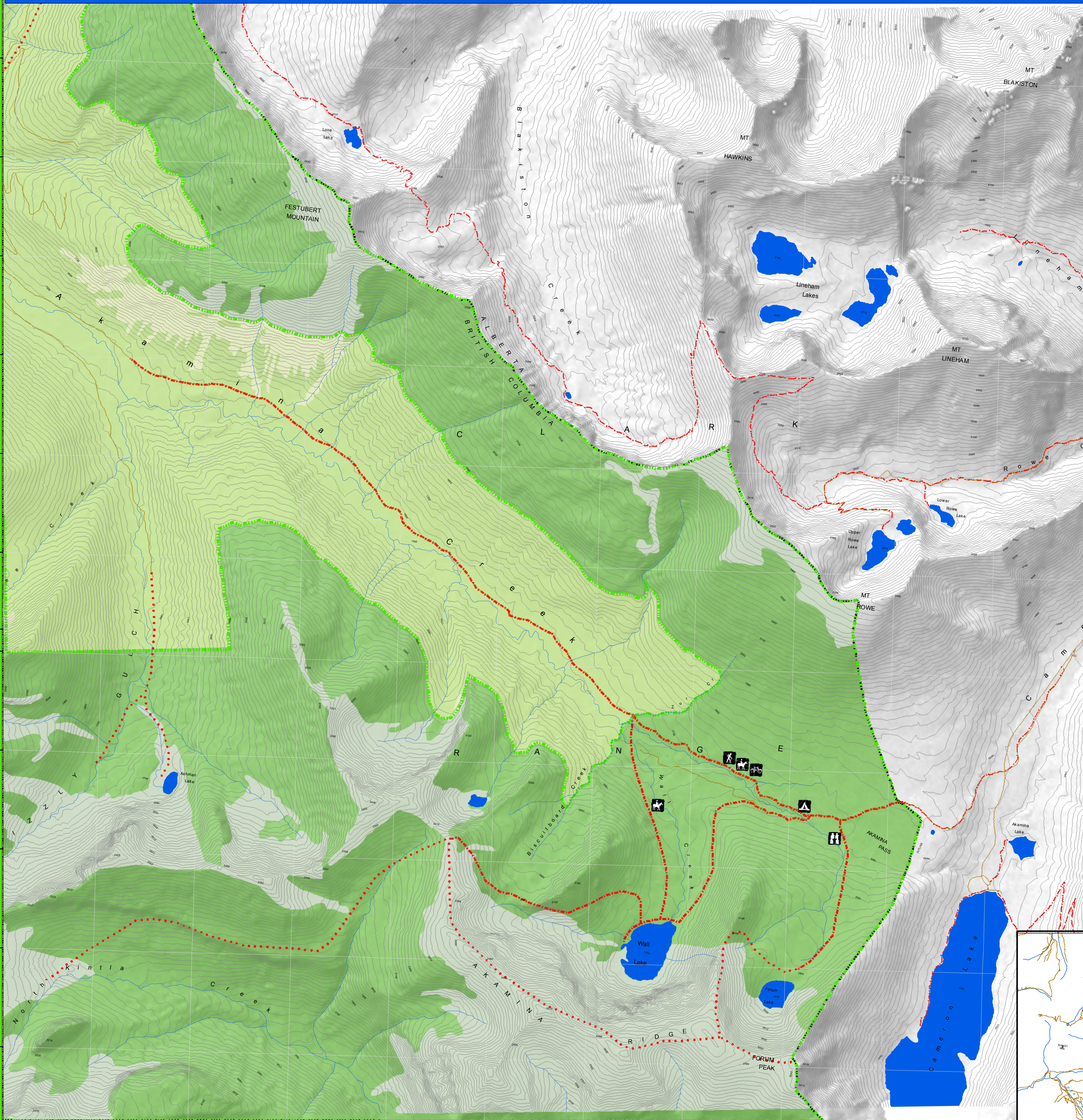


Akamina-Kishinena Park



Akamina-Kishinena Park

Activities Available at this park

Cycling

Mountain biking is permitted on designated trails only. Bicycle helmets are mandatory in British Columbia.

Fishing

Anglers fish for rainbow trout in Forum & Wall Lakes. Anyone fishing or angling in British Columbia must have an [appropriate licence](#). BC fishing licences are no longer available in Waterton. Refer to the [Ministry website](#) for the closest vendor.

Hiking

The park offers hiking opportunities for beginners as well as experienced backcountry travellers: Akamina Pass: This old road built in the 1920s transects the park from Akamina Pass through the Kishinena Creeks to eventually reach the Flathead River valley. Cyclists use this route for day excursions from Waterton Lakes.

Forum Lake & Falls: From the Ranger Station, it is 200 m to the falls and 2 km to the lake. The hike to Forum Lake takes about 45 minutes with a climb of 200 m.

Wall Lake: From the Akamina Road (200 m) from the Ranger Station it is 2 km to Wall Lake, 50 m elevation gain.

For your own safety and preservation of the park, obey posted signs and keep to designated trails. Shortcutting trails destroys plant life and soil structure. Only experienced hikers with orienteering experience should consider following routes and unmarked trails in the park.

Horseback Riding

Horseback riders are required to obtain a written letter of permission from BC Parks no less than 7 days before entering the park. Currently there is no horse use allowed to Forum Lake, and riders travelling to Wall Lake must use the horse trail.

Hunting

The park is open to hunting. Hunting is only permitted in the park during open hunting seasons. Firearms may be carried by persons with a valid BC hunting licence during an open hunting season. Horse assisted hunting trips are allowed during open seasons, but only with a Letter of Permission.

Pets on Leash

Pets/Domestic animals must be on a leash at all times and are not allowed in beach areas or park buildings. You are responsible for their behaviour and must dispose of their excrement. Dogs in backcountry parks must be on a leash at all times. Backcountry areas are not suitable for dogs or other pets due to wildlife issues and the potential for problems with bears.

Winter Recreation

There are opportunities for ice fishing in the park.

Facilities Available at this Park

Campfires

Fires in the developed area of the park are restricted to a communal fire ring in the Akamina Creek campground. Fires in the backcountry areas must be kept small, contained and a source of water to extinguish the fire must be readily available. Visitors must check with the Forest Service or at park trailheads to see if fires bans are in effect

To preserve vegetation and ground cover, please don't gather firewood from the area around your campsite when staying in the developed area of the park. Dead wood is an important habitat element for many plants and animals and it adds organic matter to the soil. You can conserve firewood and air quality by keeping your campfire small. Limited burning hours or campfire bans may be implemented. Be prepared by bringing a portable stove for cooking.

Pit or Flush Toilets

This park only has pit toilets - no flush toilets.

Walk-In/Wilderness Camping

A backcountry campground, with 10 wilderness sawdust tent pads, outhouse and food cache is provided at Akamina Creek. This campground is located just off the main trail 1.5 km from Akamina Pass, 3 km from the trailhead at Cameron Lake. Register a trip itinerary with friends; check in and check out. Winter camping is available year round at Akamina Creek sites.

Backcountry Camping Fee: \$5.00 per person / night, for all persons 13 years of age or older

Winter Camping

A backcountry campground, with 10 wilderness sawdust tent pads, outhouse and food cache is provided at Akamina Creek. This campground is located just off the main trail 1.5 km from Akamina Pass, 3 km from the trailhead at Cameron Lake. Register a trip itinerary with friends; check in and check out. Winter camping is available year round at Akamina Creek sites.

Backcountry Camping Fee: \$5.00 per person / night, for all persons 13 years of age or older

Legend

Park Boundary	Alpine / Non-Forested
Trail	Forest
Route	Hike In - Wilderness Camping
Paved Road	Parking
Rough Road	View Point
Water	Hiking Trail
Perennial Stream	Biking Trail
Glacier	Horse Trail

scale 1:20000

Information

*No person shall act as a guide or offer services as a guide in this park without a valid park use permit, or resource use permit. [Parks and Recreation Area Reg. Section 4(a).]

BC Parks- Cranbrook (250) 489-8540
 RCMP- Cranbrook (250) 489-3471
 Conservation Officer Service - 1-877-952-7277
 Forest Fire Reporting- 1-800-663-5555

for permits contact:
BC Parks
 205 Industrial Rd. G
 Cranbrook, BC V1C 7G5
 Phone: (250) 489-8540
www.gov.bc.ca/bcparks/eplore/parkpgs/psurall

Akamina-Kishinena Provincial Park

Wall and Forum Lakes

Mapping produced by:
 FrontCounterBC

British Columbia

BC Parks

